

0CNP2-M14500EN

仕様 SPECIFICATIONS

形 式 Model	YL480T-R	YL480TS	YL480TSE	YL530T-R	YL530TS	YL530TSE
(フ レ - ム) (Frame)						
全 長 mm(in) Overall length	1540 (60.6)	1570 (61.8)		1575 (62.0)	1605 (63.2)	
全 幅 mm(in) Overall width	520 (20.5)			580 (22.8)		
全 高 mm(in) Overall height	970 (38.2)	1020 (40.2)		1000 (39.4)	1040 (40.9)	
乾 燥 重 量 kg(lb) Dry weight	41.5 (91.5)	45 (99.2)	49.5 (109.1)	42.5 (93.7)	46 (101.4)	50.5 (111.4)
エ ン ジ ン タ イ プ Engine type	4 サイクルオーバーヘッドバルブ 4-cycle, overhead valve					
排 気 量 cm ³ (cu.in) Displacement	153 (9.3)					
オ イ ル 容 量 (ℓ) Oil capacity	0.55					
燃 料 タ ン ク 容 量 (ℓ) Fuel tank capacity	1.3					
ス パ ー ク プ ラ グ (NGK) Spark plug	BP6ES					
始 動 方 式 Excitement format	リコイル Recoil		セルモータ Cell motor	リコイル Recoil		セルモータ Cell motor
袋 容 量 (ℓ) Grass bag capacity	60			73		
刈 幅 mm(in) Mowing width	480 (19)			530 (21)		

※この仕様は、改良などにより予告なく変更する場合があります。

NOTE : Given specifications may be altered for improvement, etc. without prior notice.

LIST OF ENGINES TO BE MOUNTED ON MOWERS

エンジン (ENGINE) 本機 (VEHICLE)		NPC-0832		NPC-3240
		(A) FC150V-AB50	(B) FC150V-AB51	(A) FC150V-EB52
(A)	YL480T	○		
	YL480T-R			○
(B)	YL480TS	○		
	YL480TS-L	○		
	YL480TS-N	○		
(C)	YL480TSE		○	
	YL480TSE-N		○	
(D)	YL530T	○		
	YL530T-R			○
(E)	YL530TS	○		
	YL530TS-L	○		
(F)	YL530TSE		○	

PAINTING COLOR

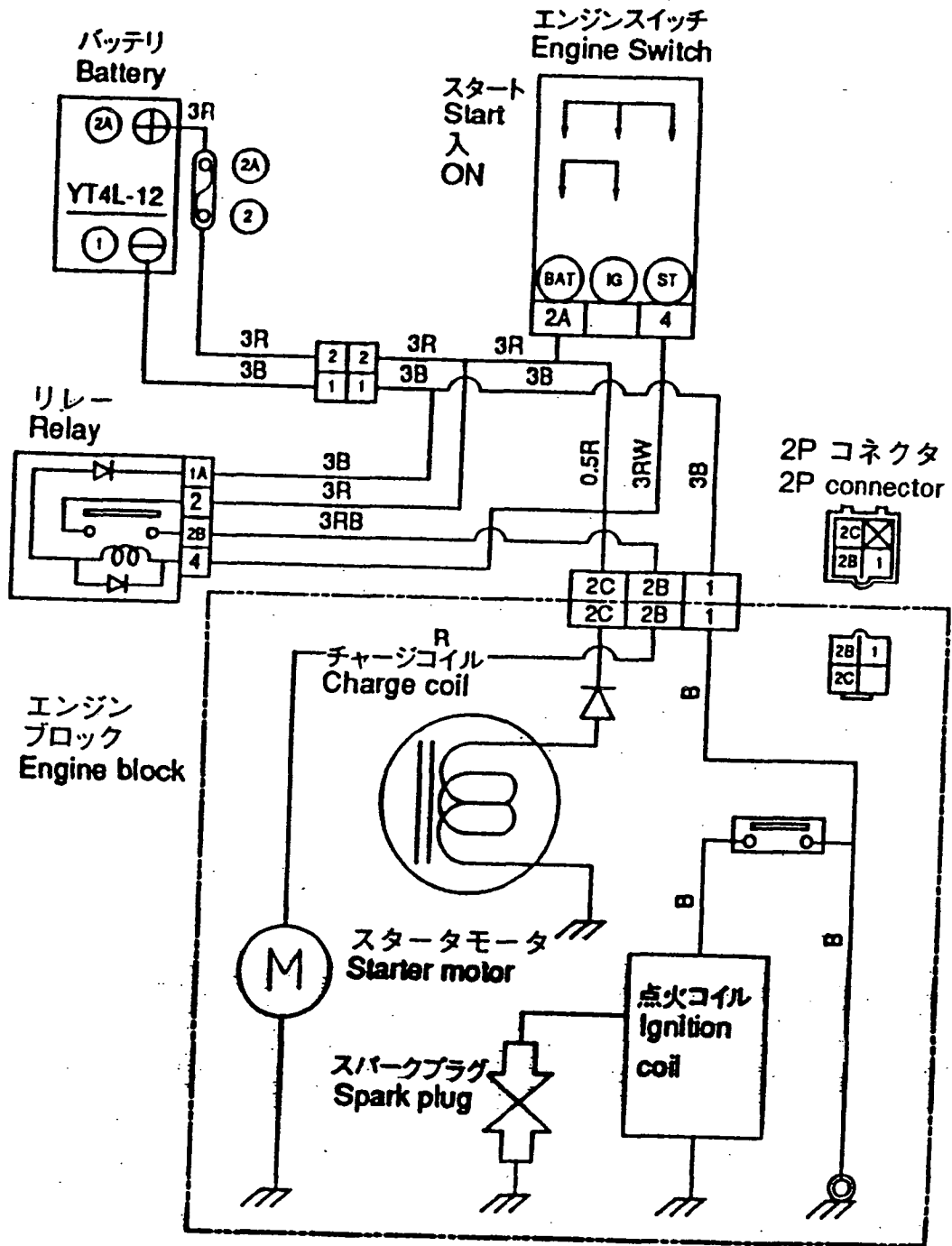
SECTION	PAINTING COLOR	COLOR SPRAY	MAIN PARTS	COLOR CODE (FIGURE)
Main body	YANMAR Black	T:0 R:-9:0 2:2:0:0:0:3	Blade(48)	1 2
Main body	YANMAR Plain silver M2	T:0 R:-9:0 3:1:0:0:0:3	Blade casing	1 9
Main body	YANMAR Gray	T:0 R:-9:0 3:6:0:0:0:3	Glass guide front 48	2 0
Main body	YANMAR Prussian blue	T:0 R:-9:0 5:0:0:0:0:3	Bonnet	3 0

Please surely use **YANMAR** Genuine color spray any **YANMAR** agricultural machines.

Given painting color may be altered for improvement, etc. without prior notice.

配線図 WIRING DIAGRAM

<YL480TSE・YL530TSE>



Contents

Fig. No. Fig. Name

ENGINE RELATION UNIT

1. CLUTCH & ENGINE COVER

DRIVE UNIT

2. INPUT
3. GEAR CASE

WHEEL UNIT

4. WHEEL
5. AXLE

REAPING UNIT

6. BLADE,FAN & CATCHER

HANDLE UNIT

7. HANDLE
8. LEVER & WIRE
9. ELECTRICAL PARTS

FRAME UNIT

10. CASING & COVER
11. SCRAPER & GUARD

LABELS & ACCESSORIES UNIT

12. LABELS

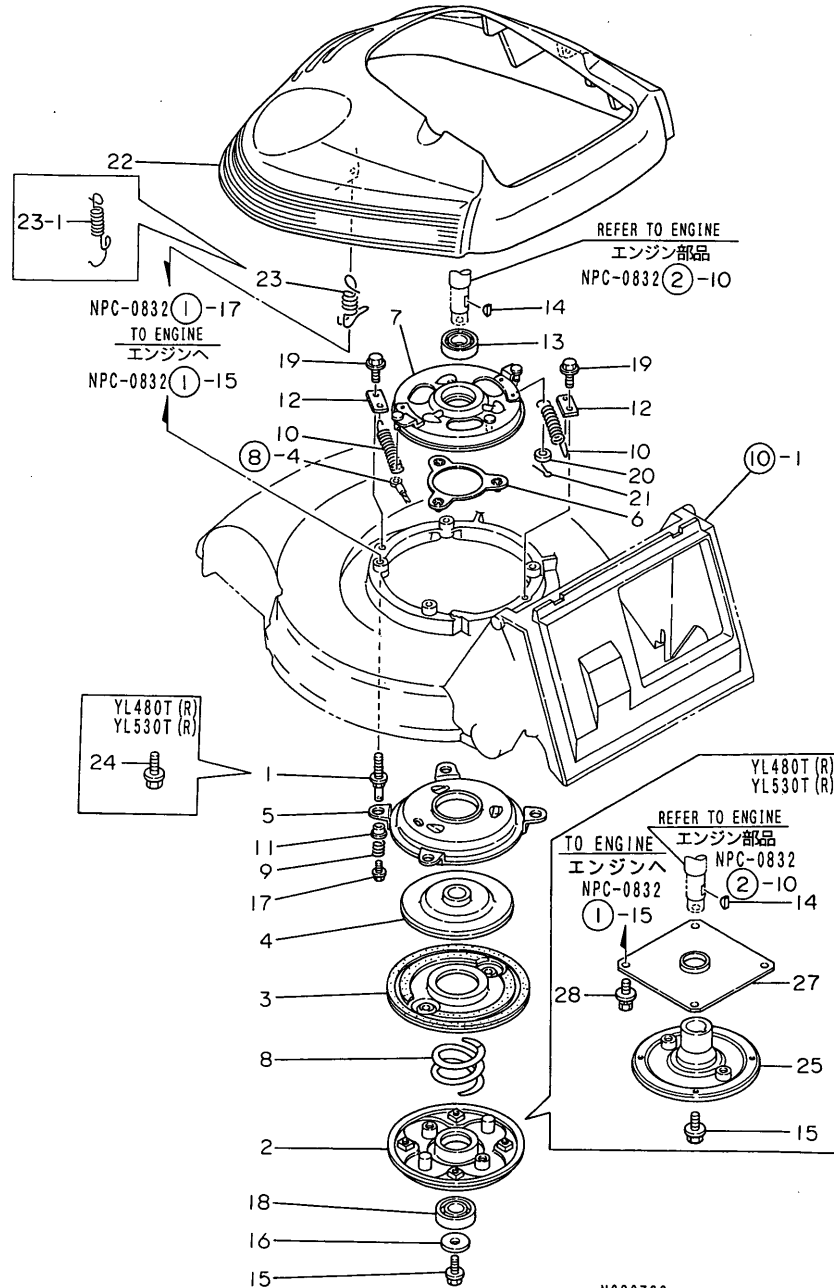
Fig. No. Fig. Name

13. TOOLS

14. LABELS(SAFETY(ADD,ITEM))

Fig.1. CLUTCH & ENGINE COVER

1. CLUTCH & ENGINE COVER



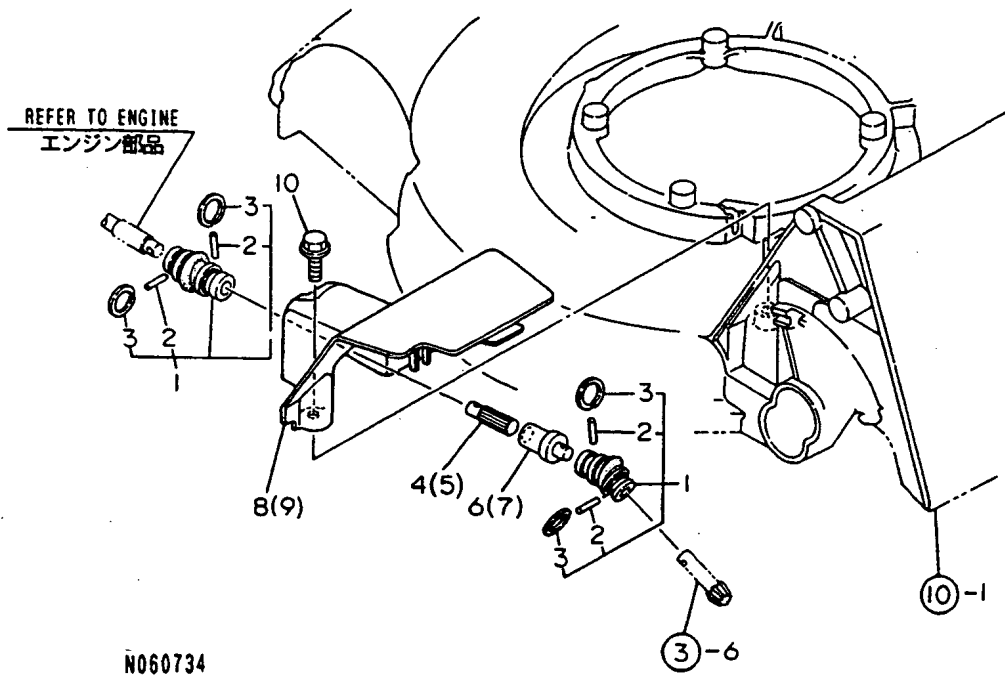
N060733

(A)=YL480T(R,-V) (D)=YL530T(R,-V)
 (B)=YL480TS(-N) (E)=YL530TS
 (C)=YL480TSE(-N) (F)=YL530TSE

No.	Lev.	Parts No.	Description	Q'ty						I	R
				(A)	(B)	(C)	(D)	(E)	(F)		
1	1	1E1061-11100	BOLT, ENGINE	4	4			4	4		
2	1	1E1060-12011	PLATE, MAIN	1	1			1	1		
3	1	1E1060-12100	DISK	1	1			1	1		
4	1	1E1061-12150	DRUM, DRIVE	1	1			1	1		
5	1	1E1061-12170	PLATE, DISK	1	1			1	1		
6	1	1E1061-12220	HOLDER, BALL	1	1			1	1		
7	1	1E1061-12250	BRACKET, DISK BOWL	1	1			1	1		
7-1	1	1E1061-12251 (B=FXXXXXX) (C=FXXXXXX)	BRACKET, DISK BOWL	1	1			1	1		N
8	1	1E1060-12300	SPRING, CLUTCH	1	1			1	1		
8-1	1	1E1071-12300 (B=FXXXXXX) (C=FXXXXXX)	SPRING, CLUTCH PR	1	1			1	1		N
9	1	1E1061-12310	SPRING, GUIDE	4	4			4	4		
10	1	1E1060-12320	SPRING	2	2			2	2		
10-1	1	1E1071-12320 (B=FXXXXXX) (C=FXXXXXX)	SPRING, CLUTCH RETURN	2	2			2	2		N
11	1	1E1060-12340	METAL, 106	4	4			4	4		
12	1	1E1061-12360	HOOK, SPRING	2	2			2	2		
13	1	1E1060-12970	BEARING, 60/22UU	1	1			1	1		
14	1	22522-040160	KEY, WOODRUFF 4X16	1	1	1	1	1	1		
15	1	1E1060-12990	BOLT, M10X28	1	1	1	1	1	1		
16	1	1A1040-46460	WASHER, 10X33X4.5	1	1			1	1		
17	1	1E4480-99150	BOLT 6X12	4	4			4	4		
18	1	24104-062044	BEARING, BALL 6204UU	1	1			1	1		
19	1	26476-080162	SCREW, TAPPING M8X16	2	2			2	2		
20	1	22137-060000	WASHER, 6	1	1			1	1		
21	1	22417-200120	COTTER PIN 2.0X12	1	1			1	1		
22	1	1E1061-13010	BONNET	1	1	1	1	1	1		
22-1	1	1E1061-13011 (A=F010552) (B=F010645) (C=F010257) (D=F010785) (E=F011213) (F=F010554)	BONNET	1	1	1	1	1	1	1	N
23	1	1E1061-13110	SPRING, BONNET MTG.	2	2	2	2	2	2		
23-1	1	1E1061-13111 (A=F010552) (B=F010645) (C=F010257) (D=F010785) (E=F011213) (F=F010554)	SPRING, BONNET	2	2	2	2	2	2	2	N
24	1	26107-100352	BOLT, M10X 35 PLATED	4				4			
25	1	1E1061-12650	FLANGE, BLADE	1				1			
26	1	1E1061-13200 (A=F010552) (B=F010645) (C=F010257) (D=F010785) (E=F011213) (F=F010554)	TAPE, SOFT 20X40	1	1	1	1	1	1	1	W
27	1	1E1071-12750 (A=FXXXXXX) (D=FXXXXXX)	COVER, ENGINE LOWER	1				1			W
28	1	26018-080164 (A=FXXXXXX) (D=FXXXXXX)	BOLT M 8 X 16	4				4			W

Fig.2. INPUT

2. INPUT

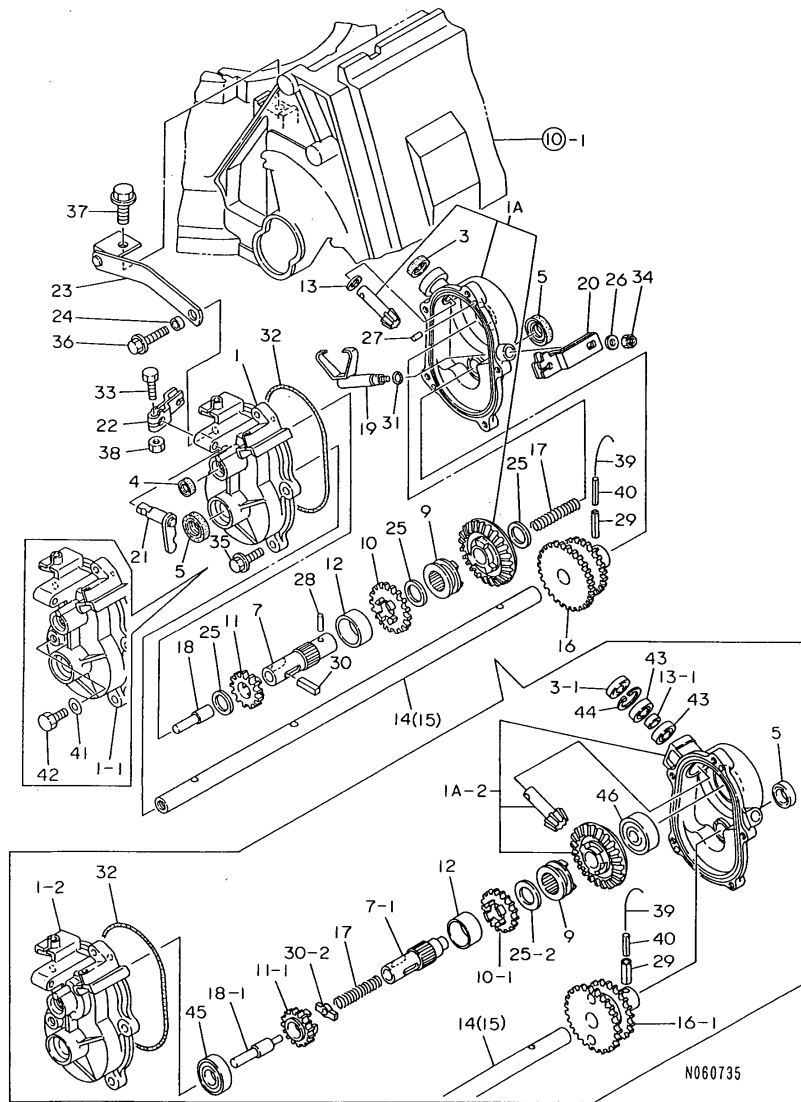


(A)=YL480T(R,-V) (D)=YL530T(R,-V)
 (B)=YL480TS(-N) (E)=YL530TS
 (C)=YL480TSE(-N) (F)=YL530TSE

No.	Lev.	Parts No.	Description	Qty						I	R
				(A)	(B)	(C)	(D)	(E)	(F)		
1	1	1E1061-21010	JOINT ASSY, TYPE 10	2	2	2	2	2	2		
2	2	1E1061-21030	PIN	4	4	4	4	4	4		
3	2	22242-000200	RING, 20	4	4	4	4	4	4		
4	1	1E1061-21100	SHAFT, SLIDE 48A	1	1	1					
5	1	1E1071-21100	SHAFT, SLIDE 53A				1	1	1		
6	1	1E1061-21120	SHAFT, SLIDE 48B	1	1	1					
7	1	1E1071-21120	SHAFT, SLIDE 53B				1	1	1		
8	1	1E1061-21200	COVER, PTO 48	1	1	1					
9	1	1E1071-21200	COVER, PTO 53				1	1	1		
10	1	26476-080162	SCREW, TAPPING M8X16	1	1	1	1	1	1		

Fig.3. GEAR CASE

3. GEAR CASE



Remarks

- (1) REF. NO.30 PART IS PLATED
REF. NO.30-1 PART IS NOT PLATED
- (2) REF. NO.1-2 PART HAS REF.NO.45
BEARING MOUNTING HOLE
- (3) TOOTH NUMBER=REF.NO.10,31
TOOTH;REF.NO.10-1,27 TOOTH

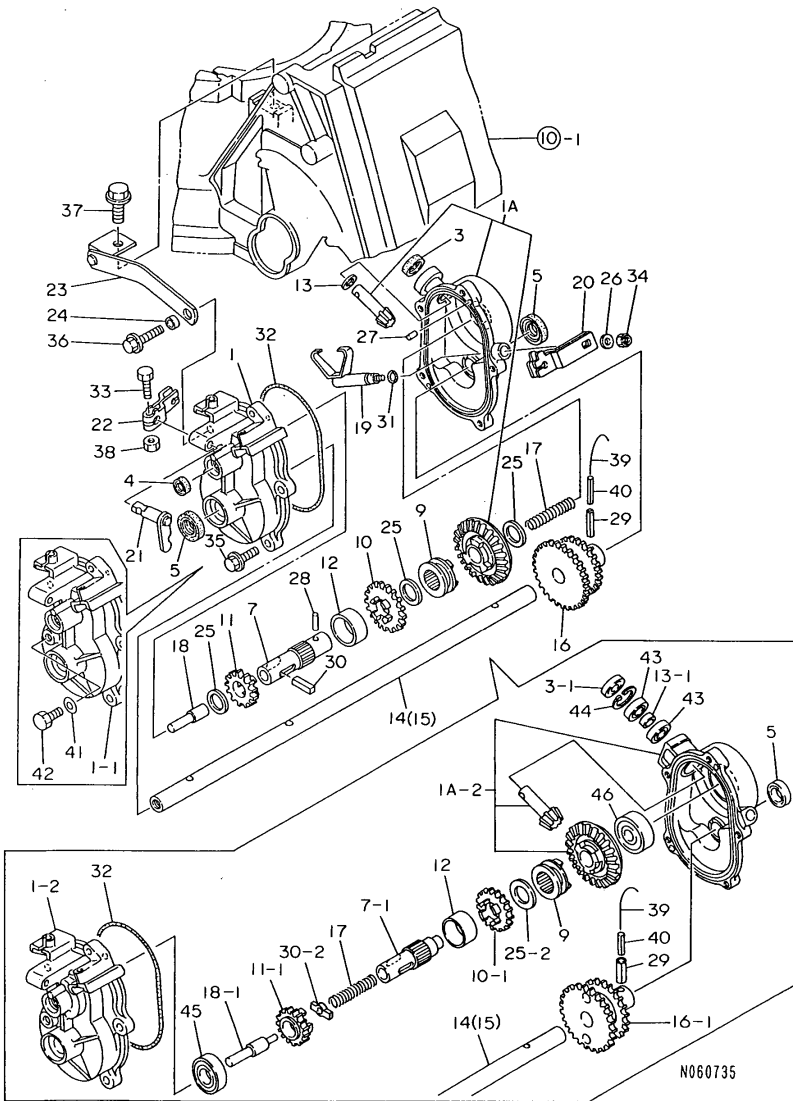
(A)=YL480T(R,-V) (D)=YL530T(R,-V)
 (B)=YL480TS(-N) (E)=YL530TS
 (C)=YL480TSE(-N) (F)=YL530TSE

No.	Lev.	Parts No.	Description	Qty						I	R
				(A)	(B)	(C)	(D)	(E)	(F)		
1	1	1E1061-25010	CASE, GEAR	1	1	1	1	1	1		
1-1	1	1E1061-25011	CASE, GEAR	1	1	1	1	1	1		N
		(A=F013872) (B=F013665) (C=F010739) (D=F013555) (E=F014823) (F=F011129)									
1-2	1	1E1061-25012	CASE, GEAR L		1				1		S 2
		(B=F015274)			(E=F017010)						
1A	1	1E1061-25500	BEVEL CASE CMP.	1	1	1	1	1	1		
1A-1	1	1E1061-25501	BEVEL CASE CMP.	1	1	1	1	1	1		N
		(A=F100302) (B=F010628) (C=F010934) (D=F100302) (E=F016133) (F=F011502)									
1A-2	1	1E1061-25502	CASE ASSY		1				1		S
		(B=F015274)			(E=F017010)						
3	1	1E1061-25050	SEAL TC10205,OIL	1	1	1	1	1	1		
3-1	1	1E1061-25051	SEAL, OIL TC10225		1				1		S
		(B=F015274)			(E=F017010)						
4	1	1E1061-25060	SEAL, OIL TC8165	1	1	1	1	1	1		
5	1	1E1061-25070	SEAL, OIL TC15255	2	2	2	2	2	2		
7	1	1E1061-25110	SHAFT,CLUTCH	1	1	1	1	1	1		
7-1	1	1E1061-25111	SHAFT, CLUTCH		1				1		S
		(B=F015274)			(E=F017010)						
9	1	1E1060-25140	CLUTCH, AXLE	1	1	1	1	1	1		
10	1	1E1061-25140	GEAR 31	1	1	1	1	1	1		
10-1	1	1E1061-25141	GEAR 27		1				1		S 3
		(B=F015274)			(E=F017010)						
10-2	1	1E1061-25142	GEAR, 27						1		N
		(B=F015274)			(E=F017530)						
11	1	1E1061-25150	GEAR 21	1	1	1	1	1	1		
11-1	1	1E1061-25151	GEAR, 21		1				1		S
		(B=F015274)			(E=F017010)						
12	1	1E1061-25160	COLLAR, 26X32X14	1	1	1	1	1	1		
13	1	1E1061-25170	LINER, 10X16X1	1	1	1	1	1	1		
13-1	1	1E1061-25171	SPACER, 10X13.8X6		1				1		S
		(B=F015274)			(E=F017010)						
14	1	1E1061-25200	SHAFT, DRIVE 48	1	1	1					
15	1	1E1071-25200	SHAFT, DRIVE 53				1	1	1		
16	1	1E1061-25210	GEAR 45-36 COMPL.	1	1	1	1	1	1		
16-1	1	1E1061-25211	GEAR 45-39		1				1		S
		(B=F015274)			(E=F017010)						
16-2	1	1E1061-25212	GEAR, 45-39						1		N
		(B=F015274)			(E=F017530)						
17	1	1E1061-25250	SPRING, 10.7X53	1	1	1	1	1	1		
18	1	1E1061-25270	PIN,CHANGE	1	1	1	1	1	1		
18-1	1	1E1061-25271	PIN, CHANGE		1				1		S
		(B=F015274)			(E=F017010)						
19	1	1E1061-25300	FORK, CLUTCH	1	1	1	1	1	1		
20	1	1E1061-25330	LEVER, TIP 45H	1	1	1	1	1	1		
21	1	1E1061-25370	LINK, CHANGE	1	1	1	1	1	1		
22	1	1E1061-25410	LEVER, TIP 30	1	1	1	1	1	1		
23	1	1E1061-25430	LINK,CASE SUPPORT	1	1	1	1	1	1		
24	1	1E6910-39640	COLLAR, 6.5X10.5X5.5	1	1	1	1	1	1		
25	1	1E4060-74090	LINER 17X24X1	3	3	3	3	3	3		
25-1	1	1E1061-25180	LINER, 17X30X1	3	3	3	3	3	3		N
		(A=FXXXXXX) (B=FXXXXXX) (C=FXXXXXX) (D=FXXXXXX) (E=FXXXXXX) (F=FXXXXXX)									

Fig.3. GEAR CASE

(A)=YL480T(R,-V) (D)=YL530T(R,-V)
 (B)=YL480TS(-N) (E)=YL530TS
 (C)=YL480TSE(-N) (F)=YL530TSE

3. GEAR CASE



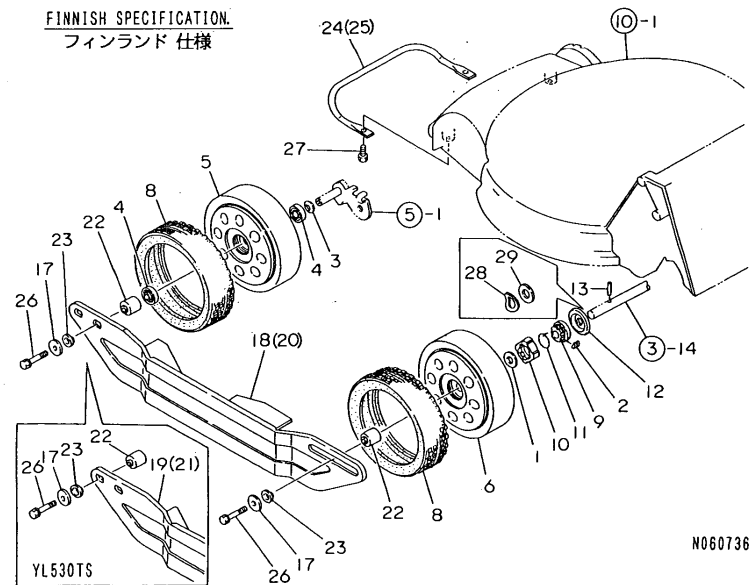
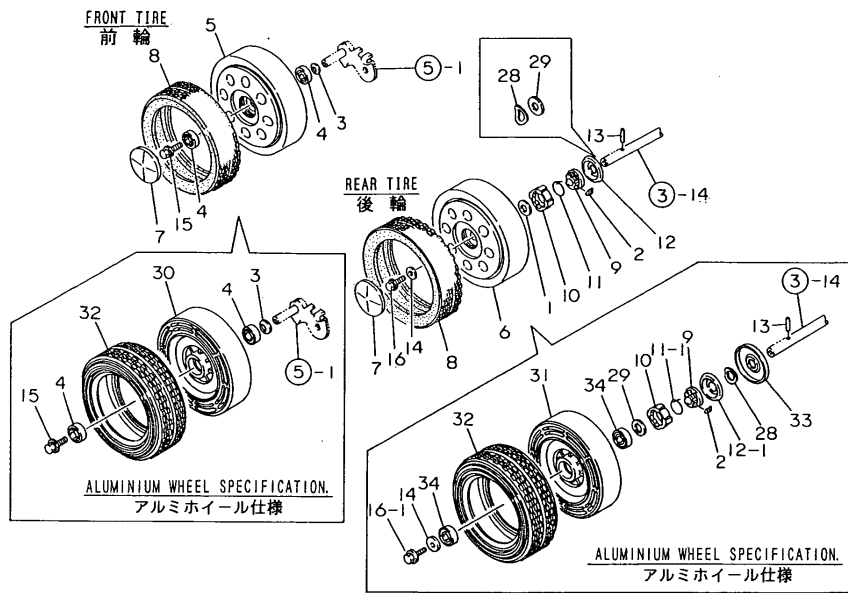
No.	Lev.	Parts No.	Description	Qty						I	R
				(A)	(B)	(C)	(D)	(E)	(F)		
25-2	1	1E1061-25180 (B=F015274)	LINER, 17X30X1		1				1		K
26	1	22137-060000	WASHER, 6		1	1	1	1	1	1	
27	1	22312-040080	PIN, PARALLEL M4X 8		2	2	2	2	2	2	
28	1	22312-040140 (B=F015274)	PIN, PARALLEL M4X14			1			1		Z
29	1	22351-060025	PIN, SPRING 6.0X25		1	1	1	1	1	1	
30	1	22551-050250	KEY, 5X 25			1	1	1	1	1	
30-1	1	1E1061-25490 (B=F010528)	KEY 5X5X25		1	1	1	1	1	1	S 1
30-2	1	1E1061-25491 (B=F015274)	TINE, CLUTCH								(F=F011472) S
31	1	24311-000070	O-RING, 1AP7.0		1	1	1	1	1	1	
32	1	24321-001100	O-RING, 1AG110.0		1	1	1	1	1	1	
33	1	26117-060202	BOLT M 6X 20		1	1	1	1	1	1	
34	1	26347-060002	NUT, M6		1	1	1	1	1	1	
35	1	26476-060202	SCREW, TAPPING M6X20		4	4	4	4	4	4	
36	1	26476-060302	SCREW, TAPPING M6X30		1	1	1	1	1	1	
37	1	26476-080162	SCREW, TAPPING M8X16		1	1	1	1	1	1	
38	1	26717-060002	NUT, M6		1	1	1	1	1	1	
39	1	22451-100160	WIRE 1.0X160,BINDING		1	1	1	1	1	1	W
40	1	22351-035025 (A=F013047)	PIN, SPRING 3.5X25		1	1	1	1	1	1	W
41	1	23414-080000 (A=F013872)	GASKET, 8X1.0		1	1	1	1	1	1	W
41-1	1	22190-080000 (A=F014222)	WASHER, SEAL 8		1	1	1	1	1	1	N
42	1	26117-080122 (A=F013872)	BOLT M 8X 12 PLATED		1	1	1	1	1	1	W
43	1	1E1061-25481 (B=F015274)	BEARING, 6900			2			2		W
44	1	22252-000220 (B=F015274)	RING, 22			1				1	W
45	1	24101-060034 (B=F015274)	BEARING, BALL 6003			1				1	W
46	1	24101-063014 (B=F015274)	BEARING, BALL 6301			1				1	W

Remarks

- (1) REF. NO.30 PART IS PLATED
REF. NO.30-1 PART IS NOT PLATED
- (2) REF. NO.1-2 PART HAS REF.NO.45
BEARING MOUNTING HOLE
- (3) TOOTH NUMBER=REF.NO.10,31
TOOTH;REF.NO.10-1,27 TOOTH

Fig.4. WHEEL

4. WHEEL



(A)=YL480T(R,-V)
(B)=YL480TS(-N)
(C)=YL480TSE(-N)

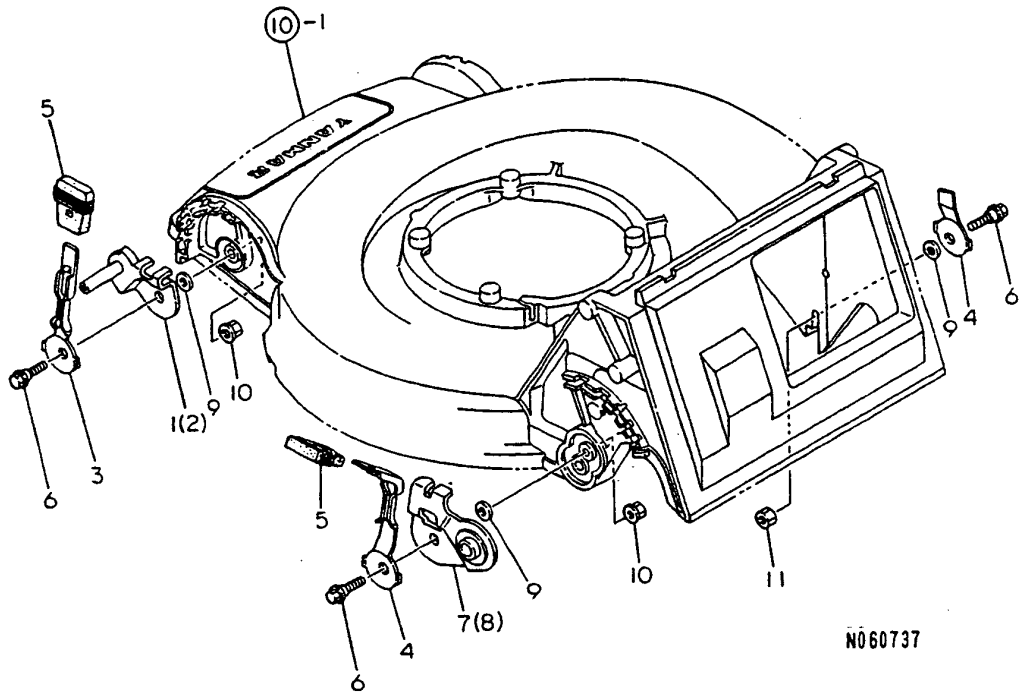
(D)=YL530T(R,-V)
(E)=YL530TS
(F)=YL530TSE

No.	Lev.	Parts No.	Description	Qty						I	R
				(A)	(B)	(C)	(D)	(E)	(F)		
1	1	1E6210-11050 (A=F013047) (B=F013225) (C=F010689) (D=F012905)	SHIM, 15X30X1	2	2	2	2	2	2	2	Z
2	1	1E1060-25420	TINE, CLUTCH	4	4	4	4	4	4	4	
3	1	1E1060-31100	SPRING, LOCK 12.7X23	2	2	2	2	2	2	2	
4	1	1E1060-31450	BEARING, 12X28.8X11	4	4	4	4	4	4	4	
5	1	1E1061-31500	WHEEL, F	2	2	2	2	2	2	2	
6	1	1E1061-31510	WHEEL R	2	2	2	2	2	2	2	
6-1	1	1E1061-31511 (A=F013047) (B=F013225) (C=F013689) (D=F012905)	WHEEL R	2	2	2	2	2	2	2	N
7	1	1E1061-31530	CAP, WHEEL	4	4	4	4	4	4	4	
8	1	1E1061-31550	TIRE	4	4	4	4	4	4	4	
9	1	1E1061-31650	CLUTCH	2	2	2	2	2	2	2	
10	1	1E1061-31660	HOUSING,CLUTCH	2	2	2	2	2	2	2	
11	1	1E1061-31670	SPRING 26,RING	2	2	2	2	2	2	2	
11-1	1	1E1061-31671 (A=FXXXXXX) (B=FXXXXXX) (C=FXXXXXX) (D=FXXXXXX) (E=FXXXXXX) (F=FXXXXXX)	SPRING, RING 26	2	2	2	2	2	2	2	N
12	1	1E1061-31680	COVER,CLUTCH	2	2	2	2	2	2	2	
12-1	1	1E1061-31681 (A=F012147) (B=F012125) (C=F010629) (D=F011785) (E=F013443) (F=F011079)	COVER, CLUTCH	2	2	2	2	2	2	2	N
13	1	1E1061-31750	PIN, 5X25	2	2	2	2	2	2	2	
14	1	22157-080000	WASHER, 8	2	2	2	2	2	2	2	
15	1	26018-080164	BOLT M 8X 16	2	2	2	2	2	2	2	
16	1	26107-080122	BOLT M 8X 12 PLATED		2	2		2	2	2	
16-1	1	26107-080162 (B=F010528) (C=F010266) (E=F016133) (F=F011472)	BOLT M 8X 16 PLATED	2	2	2	2	2	2	2	N
17	1	1E4070-46290	WASHER, 9X30X3.2		4	4		4	4		1
18	1	1E1061-65010	GUARD, SIDE 48L		1	1					1
19	1	1E1071-65010	GUARD, SIDE 53L					1	1		1
20	1	1E1061-65030	GUARD, SIDE 48R		1	1					1
21	1	1E1071-65030	GUARD, SIDE 53R					1	1		1
22	1	1E1061-65070	BOSS, GUARD		4	4		4	4		1
23	1	1E1061-65080	METAL, GUARD		4	4		4	4		1
24	1	1E1061-65100	GUARD, FRONT 48		1	1					1
25	1	1E1071-65100	GUARD, FRONT 53					1	1		1
26	1	26016-080454	BOLT M 8X 45		4	4		4	4		1
27	1	26476-080162	SCREW, TAPPING M8X16		2	2		2	2		1
28	1	1E1061-31690 (A=F012147) (B=F012125) (C=F010629) (D=F011785) (E=F013443) (F=F011079)	PLATE, COVER	2	2	2	2	2	2	2	W
29	1	1E4110-24010 (A=F012147) (B=F012425) (C=F010629) (D=F011785) (E=F013543) (F=F011079)	LINER, 15	2	2	2	2	2	2	2	W
30	1	1E1071-31570	WHEEL, PRF	2	2	2	2	2	2	2	2
31	1	1E1071-31580	WHEEL, PRF	2	2	2	2	2	2	2	2
32	1	1E1071-31600	TIRE, PRO	4	4	4	4	4	4	4	2
33	1	1E1071-31700	COVER, CLUTCH	2	2	2	2	2	2	2	2
34	1	24104-060024	BEARING, BALL 6002UU	4	4	4	4	4	4	4	2

Remarks
(1)EXCLUSIVE FOR FINNISH.
(2)EXCLUSIVE FOR TYPE ALUMINIUM WHEEL

Fig.5. AXLE

5. AXLE



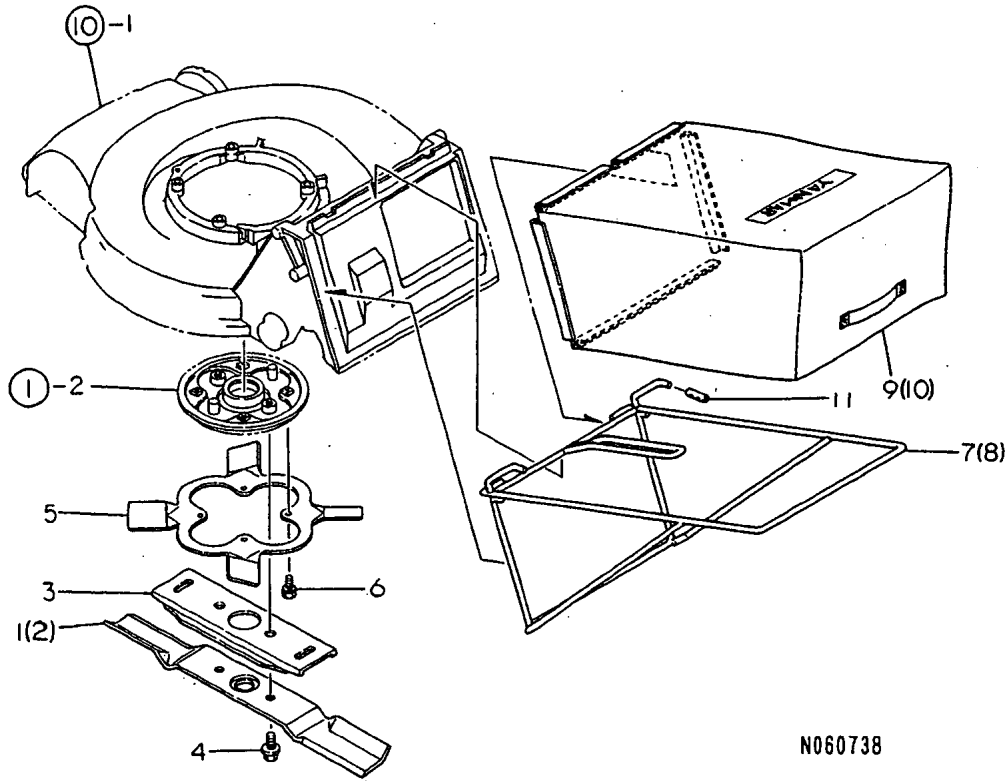
(A)=YL480T(R,-V)
 (B)=YL480TS(-N)
 (C)=YL480TSE(-N)

(D)=YL530T(R,-V)
 (E)=YL530TS
 (F)=YL530TSE

No.	Lev.	Parts No.	Description	Q'ty						I	R
				(A)	(B)	(C)	(D)	(E)	(F)		
1	1	1E1061-35010	AXLE, FRONT L	1	1	1	1	1	1		
2	1	1E1061-35050	AXLE, FRONT R	1	1	1	1	1	1		
3	1	1E1061-35200	LEVER, WHEEL	2	2	2	2	2	2		
4	1	1E1061-35210	LEVER, WHEEL	2	2	2	2	2	2		
5	1	1E1061-35250	KNOB, ADJUST	4	4	4	4	4	4		
6	1	1E1061-35350	BOLT, STEPPED M8X25	4	4	4	4	4	4		
7	1	1E1061-35510	AXLE, REAR L	1	1	1	1	1	1		
8	1	1E1061-35550	AXLE, REAR R	1	1	1	1	1	1		
9	1	22137-080000	WASHER, 8	4	4	4	4	4	4		
10	1	26367-080002	NUT, M8	3	3	3	3	3	3		
11	1	26717-080002	NUT, M8	1	1	1	1	1	1		

Fig.6. BLADE,FAN & CATCHER

6. BLADE, FAN & CATCHER



(A)=YL480T(R,-V)
(B)=YL480TS(-N)
(C)=YL480TSE(-N)

(D)=YL530T(R,-V)
(E)=YL530TS
(F)=YL530TSE

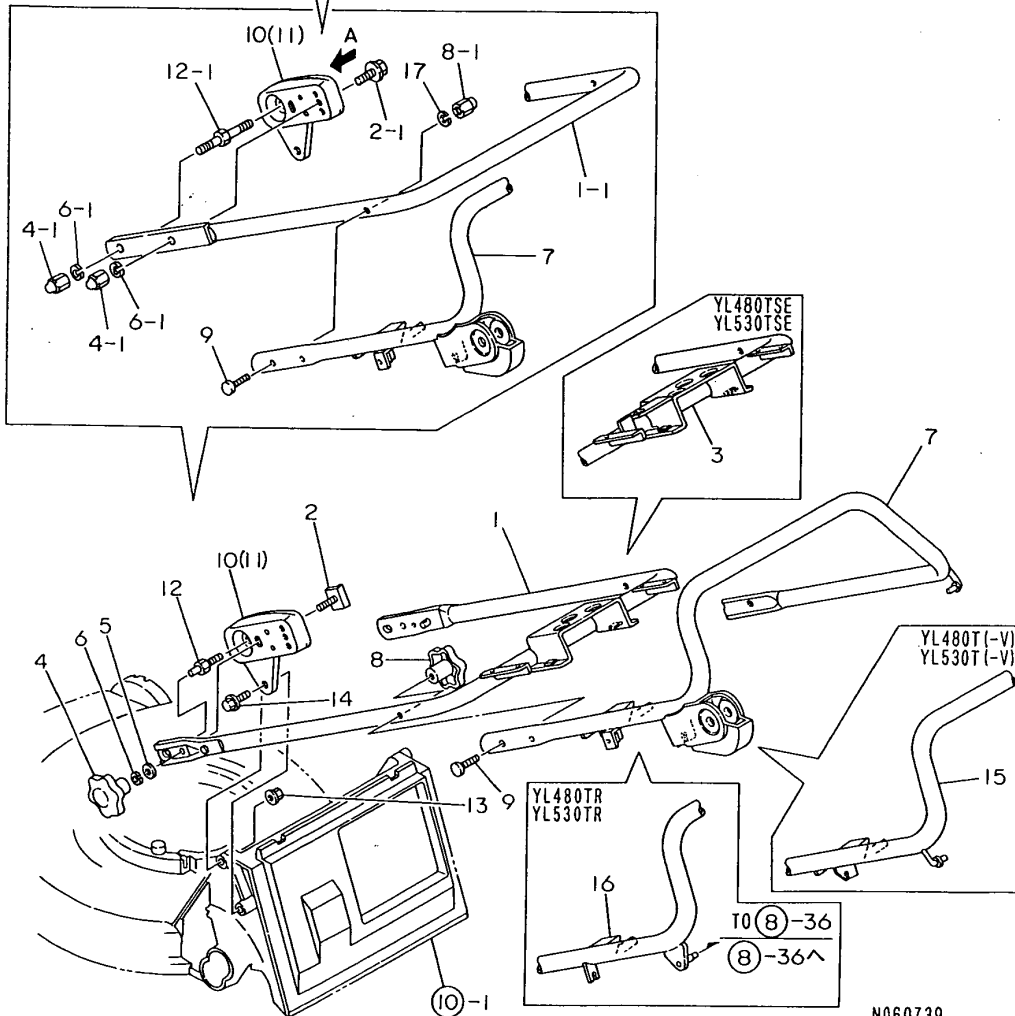
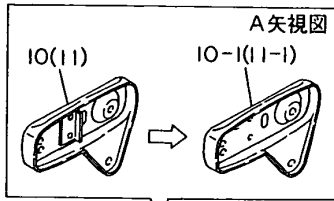
No.	Lev.	Parts No.	Description	Q'ty						I	R
				(A)	(B)	(C)	(D)	(E)	(F)		
1	1	1E1061-41100	BLADE, 48	1	1	1					
2	1	1E1071-41100	BLADE 53					1	1	1	
3	1	1E1060-41120	GUIDE, BLADE	1	1	1	1	1	1	1	
4	1	26138-100202	BOLT 10X20,COLLAR HD	2	2	2	2	2	2	2	
5	1	1E1060-42050	FAN, BLADE	1	1	1	1	1	1	1	
6	1	26016-060122	BOLT, M6X 12	4	4	4	4	4	4	4	
7	1	1E1061-43010	FRAME 48,CATCHER	1	1	1					
7-1	1	1E1061-43011	FRAME, CATCHER 48 (A=F010552) (B=F010645) (C=F010257)	1	1	1					N
8	1	1E1071-43010	FRAME 53,CATCHER					1	1	1	
8-1	1	1E1071-43011	FRAME, CATCHER 53 (D=F010785) (E=F011213) (F=F010554)					1	1	1	N
9	1	1E1061-43100	CATCHER, 48	1	1	1					
10	1	1E1071-43100	CATCHER, 53					1	1	1	
11	1	1E1061-43200	PIPE, 8 10 35 (A=F010180) (B=F010140) (C=F010072) (D=F010198) (E=F010426) (F=F010198)	2	2	2	2	2	2	2	W

Fig.7. HANDLE

7. HANDLE

(A)=YL480T(R,-V)
 (B)=YL480TS(-N)
 (C)=YL480TSE(-N)

(D)=YL530T(R,-V)
 (E)=YL530TS
 (F)=YL530TSE

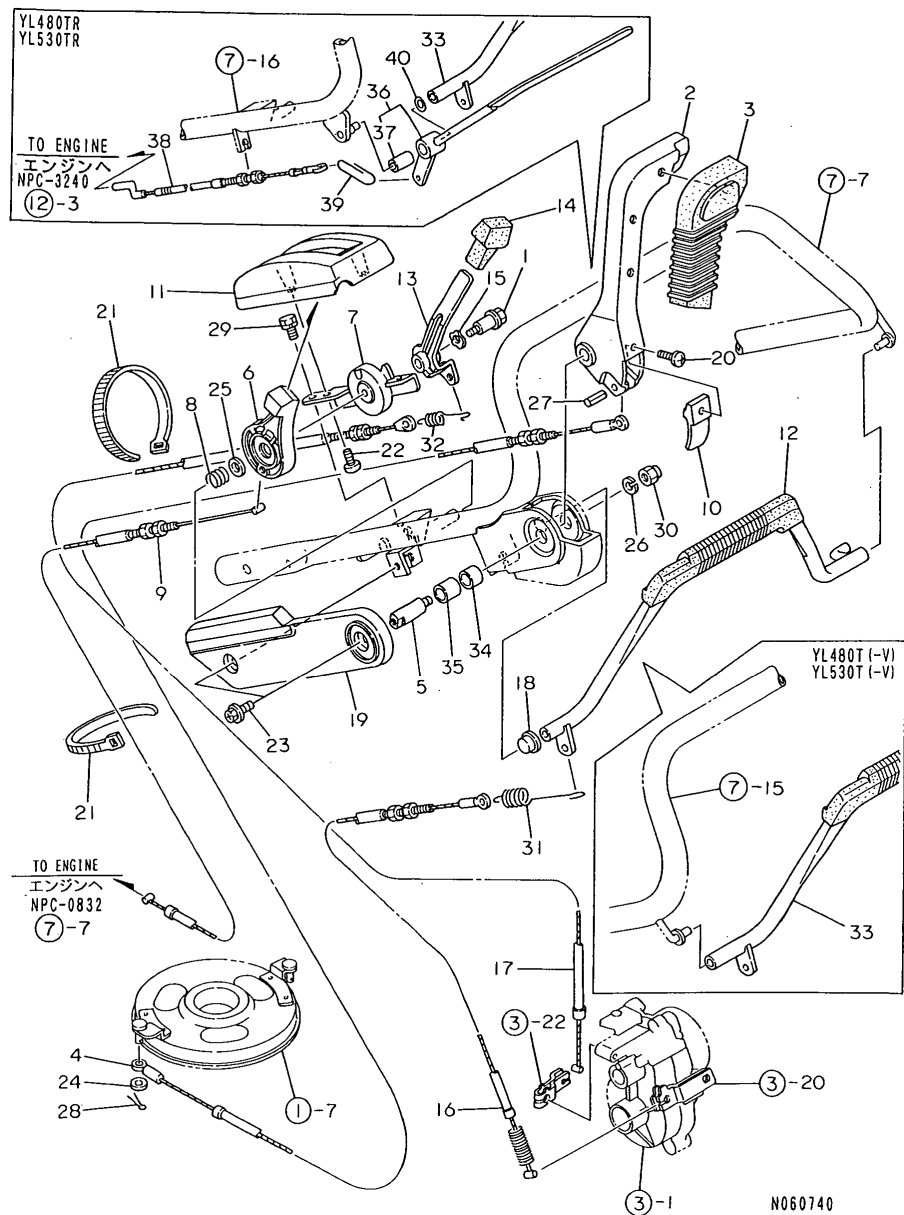


N060739

No.	Lev.	Parts No.	Description	Qty						I	R
				(A)	(B)	(C)	(D)	(E)	(F)		
1	1	1E1061-50010	HANDLE, MAIN	1	1		1	1			
1-1	1	1E1071-50010 (B=F015274)	HANDLE COMP.,MAIN		1			1			S
				(E=F017010)							
2	1	1E1061-50100	BOLT, HANDLE M8X30	2	2	2	2	2	2		
2-1	1	26107-080302 (B=F015274)	BOLT M 8X 30 PLATED		2			2			S
				(E=F017010)							
3	1	1E1061-50510	HANDLE COMP.,MAIN			1					1
4	1	1E1060-51101	SCREW, KNOB M8	2	2	2	2	2	2		
4-1	1	26668-080002 (B=F015274)	NUT, CAP M8		4			4			S
				(E=F017010)							
5	1	22137-080000 (B=F015274)	WASHER, 8		2			2			Z
				(E=F017010)							
6	1	22217-080000	WASHER, SPRING 8	2	2	2	2	2	2		
6-1	1	22217-080000 (B=F015274)	WASHER, SPRING 8		4			4			K
				(E=F017010)							
7	1	1E1061-51010	HANDLE TS COMPL.		1	1		1	1		
7-1	1	1E1061-51011 (B=FXXXXXX) (C=FXXXXXX)	HANDLE TS COMPL.		1	1		1	1		N
				(E=FXXXXXX)		(F=FXXXXXX)					
8	1	1E1060-51101	SCREW, KNOB M8	2	2	2	2	2	2		
8-1	1	26668-080002 (B=F015274)	NUT, CAP M8		2			2			S
				(E=F017010)							
9	1	1E1061-51110	BOLT, M8X40	2	2	2	2	2	2		
10	1	1E1061-56010	STAY, HANDLE L	1	1	1	1	1	1		
10-1	1	1E1061-56020 (B=F015274)	STAY, HANDLE LZ		1			1			Q
				(E=F017010)							
11	1	1E1061-56050	STAY, HANDLE R	1	1	1	1	1	1		
11-1	1	1E1061-56060 (B=F015274)	STAY, HANDLE RZ		1			1			Q
				(E=F017010)							
12	1	1E1061-56100	BOLT, STAY M8X36	2	2	2	2	2	2		
12-1	1	1E1071-56200 (B=F015274)	BOLT, STAY M8X36 PR		2			2			S
				(E=F017010)							
13	1	26367-080002	NUT, M8	2	2	2	2	2	2		
14	1	26476-080162	SCREW, TAPPING M8X16	2	2	2	2	2	2		
15	1	1E1061-51700	HANDLE ASSY, TD	1			1				
16	1	1E1061-51710	HANDLE COMP.,TR	1			1				
17	1	22217-080000 (B=F015274)	WASHER, SPRING 8		2			2			W
				(E=F017010)							

Fig.8. LEVER & WIRE

8. LEVER & WIRE



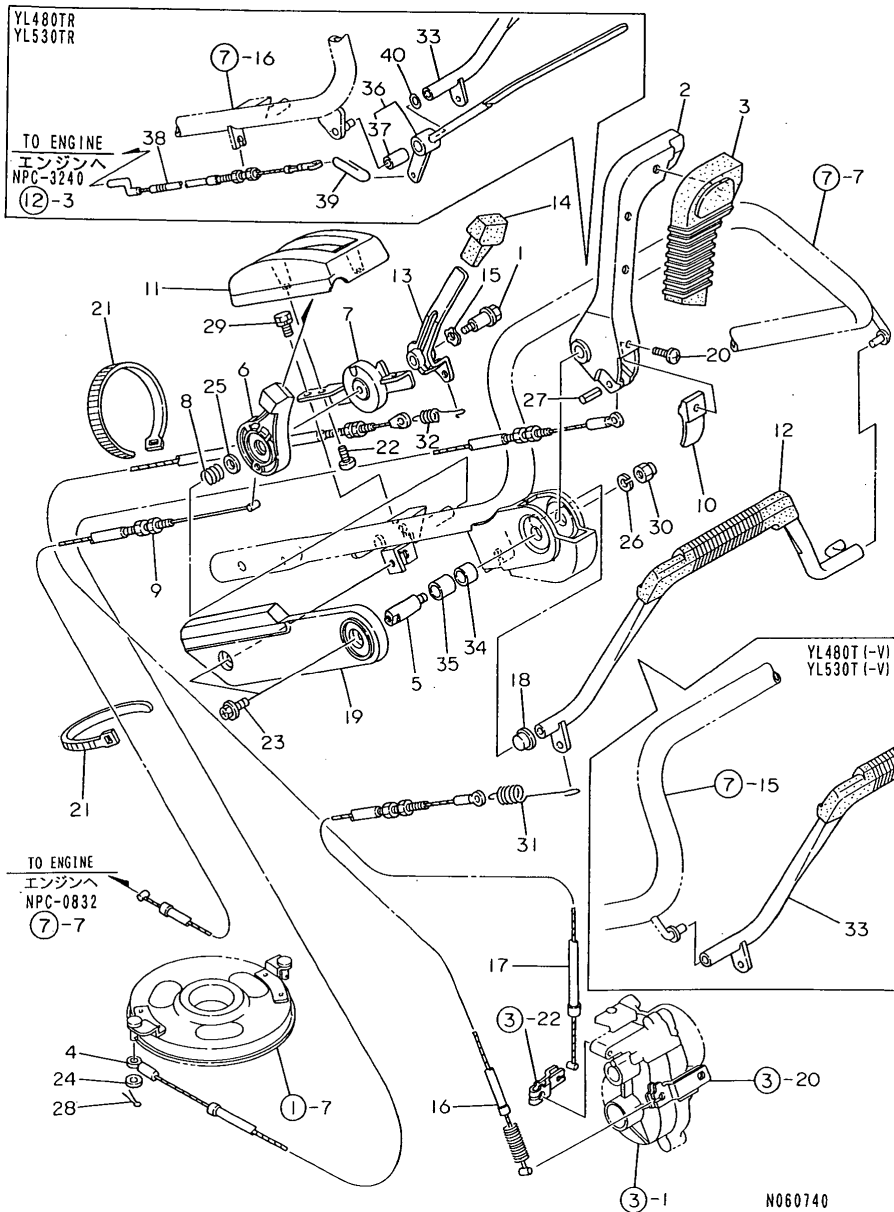
(A)=YL480T(R,-V) (D)=YL530T(R,-V)
 (B)=YL480TS(-N) (E)=YL530TS
 (C)=YL480TSE(-N) (F)=YL530TSE

No.	Lev.	Parts No.	Description	Q'ty						I	R
				(A)	(B)	(C)	(D)	(E)	(F)		
1	1	1E1060-12350	BOLT, STEPPED M6X12	1	1	1	1	1	1		
2	1	1E1061-57010	LEVER, BLADE CLUTCH		1	1		1	1		
2-1	1	1E1061-57011	LEVER, BLADE CLUTCH		1	1		1	1		N
		(B=FXXXXXX) (C=FXXXXXX)			(E=FXXXXXX)			(F=FXXXXXX)			
3	1	1E1061-57040	GRIP, CLUTCH		1	1		1	1		
4	1	1E1061-57050	WIRE, BLADE CLUTCH		1	1		1	1		
4-1	1	1E1061-57051	WIRE, BLADE CLUTCH		1			1			N
		(B=F015274)			(E=F017010)						
5	1	1E1061-57060	PIN, LEVER FULCRUM		1	1		1	1		
5-1	1	1E1061-57061	PIN, LEVER FULCRUM		1	1		1	1		N
		(B=FXXXXXX) (C=FXXXXXX)			(E=FXXXXXX)			(F=FXXXXXX)			
6	1	1E1061-57110	LEVER, ACCELERATOR	1	1	1	1	1	1		
6-1	1	1E1061-57120	LEVER L, ACCELERATOR		1			1			N 1
		(B=F011705)			(E=F012998)						
6-2	1	1E1061-57111	LEVER, ACCELERATOR	1	1	1	1	1	1		N
		(A=FXXXXXX) (B=FXXXXXX) (C=FXXXXXX) (D=FXXXXXX)			(E=FXXXXXX)			(F=FXXXXXX)			
6-3	1	1E1061-57121	LEVER, ACCELERATOR L		1	1		1	1		N 1
		(B=FXXXXXX) (C=FXXXXXX)			(E=FXXXXXX)			(F=FXXXXXX)			
7	1	1E1061-57130	COVER, ACCELERATOR	1	1	1	1	1	1		
8	1	1E1061-57140	SPRING 13, COILED	1	1	1	1	1	1		
8-1	1	1E1061-57141	SPRING, COIL 13	1	1	1	1	1	1		N
		(A=F010552) (B=F010645) (C=F010257) (D=F010785)			(E=F011213)			(F=F010554)			
9	1	1E1061-57150	WIRE, ACCELERATOR	1	1	1	1	1	1		
9-1	1	1E1061-57151	WIRE, ACCELERATOR		1			1			N
		(B=F015274)			(E=F017010)						
10	1	1E1060-57200	PLATE, LEVER		1	1		1	1		
11	1	1E1061-57300	COVER, LATCH	1	1	1	1	1	1		
12	1	1E1061-57500	LEVER CMP, TRV. CLUTCH		1	1		1	1		
12-1	1	1E1061-57501	LEVER, CLUTCH	1	1	1	1	1	1		N
		(B=F010645) (C=F010257)			(E=F011213)			(F=F010554)			
13	1	1E1061-57560	LEVER, CHANGE	1	1	1	1	1	1		
14	1	1E1061-57600	GRIP, LEVER	1	1	1	1	1	1		
15	1	1E1061-57640	WASHER, WAVE 10	1	1	1	1	1	1		
16	1	1E1061-57650	WIRE, TRAVEL CLUTCH	1	1	1	1	1	1		
16-1	1	1E1061-57651	WIRE, TRAVEL CLUTCH		1			1			N
		(B=F015274)			(E=F017010)						
17	1	1E1061-57700	WIRE, CHANGE	1	1	1	1	1	1		
17-1	1	1E1061-57701	WIRE, SHIFT		1			1			N
		(B=F015274)			(E=F017010)						
18	1	1E1061-57750	METAL, LEVER		1	1		1	1		
19	1	1E1061-57850	COVER, HANDLE		1	1		1	1		
20	1	1G0010-82850	SCREW, TAPPING M4X12		1	1		1	1		
21	1	1E6102-84970	BAND 140, WIRE LOCK	2	2	2	2	2	2		
22	1	1E6790-95471	SCREW, TAPPING M6X16	2	2	2	2	2	2		
23	1	1E4320-99120	BOLT, M6X16 CRH	2	2			2	2		
24	1	22137-060000	WASHER, 6		1	1		1	1		
25	1	22137-100000	WASHER, 10	1	1	1	1	1	1		
26	1	22217-080000	WASHER, SPRING 8		1	1		1	1		
27	1	22351-050025	PIN, SPRING 5.0X25		1	1		1	1		
28	1	22417-200120	COTTER PIN 2.0X12		1	1		1	1		
29	1	26016-060124	BOLT 6X12 W/L.W.	1	1	1	1	1	1		

Remarks
 (1) EXCLUSIVE FOR FINNISH.

Fig.8. LEVER & WIRE

8. LEVER & WIRE



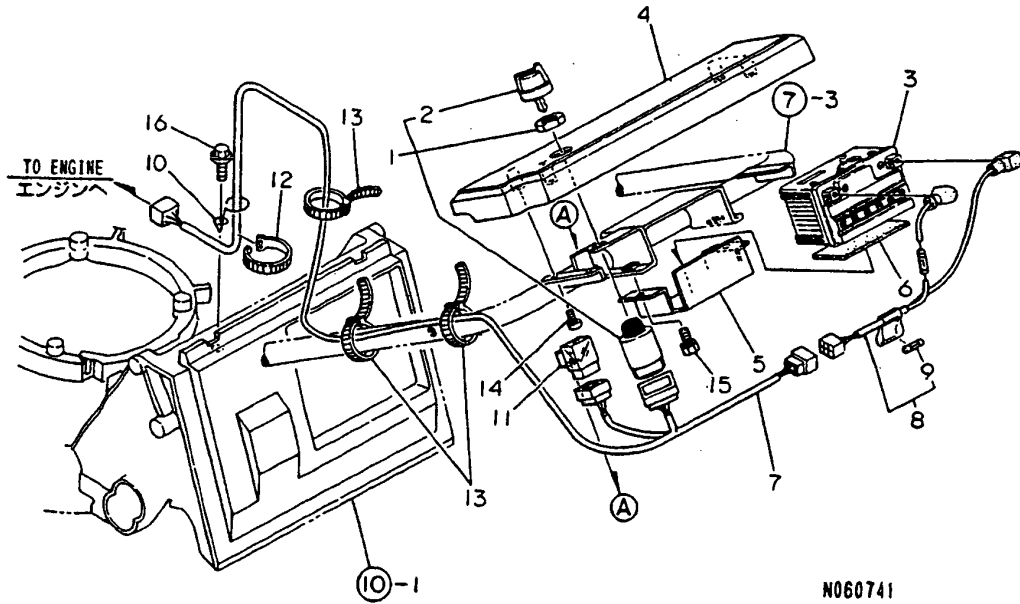
(A)=YL480T(R,-V) (D)=YL530T(R,-V)
 (B)=YL480TS(-N) (E)=YL530TS
 (C)=YL480TSE(-N) (F)=YL530TSE

No.	Lev.	Parts No.	Description	Q'ty						I	R	
				(A)	(B)	(C)	(D)	(E)	(F)			
30	1	26658-080002	NUT, CAP M8		1	1		1	1			
31	1	1E1061-57730	SPRING, TENSION 112	1	1	1	1	1	1			
32	1	1E1061-57740	SPRING, TENSION 66	1	1	1	1	1	1			
33	1	1E1061-57920	LEVER D CMP,TR.CLTCH	1				1				
33-1	1	1E1061-57921	LEVER, CLUTCH	1			1				N	
				(A=F010552)	(D=F010785)							
34	1	24550-012120	BUSH, 12X12		1	1		1	1		W	
				(B=FXXXXXX) (C=FXXXXXX)	(E=FXXXXXX) (F=FXXXXXX)							
34-1	1	1E1061-57080	METAL, 12X12		1	1		1	1		S	
				(B=FXXXXXX) (C=FXXXXXX)	(E=FXXXXXX) (F=FXXXXXX)							
35	1	24550-012150	BUSH, 12X15		1	1		1	1		W	
				(B=FXXXXXX) (C=FXXXXXX)	(E=FXXXXXX) (F=FXXXXXX)							
35-1	1	1E1061-57090	METAL, 12X15		1	1		1	1		S	
				(B=FXXXXXX) (C=FXXXXXX)	(E=FXXXXXX) (F=FXXXXXX)							
36	1	1E1061-57200	LEVER ASSY, STOP	1			1					
37	2	24550-010200	BUSH, 10X20	1			1					
38	1	1E1061-57270	WIRE,ENGINE STOP	1			1					
39	1	1E1061-57280	CLIP, WIRE	1			1					
40	1	22137-080000	WASHER, 8	1			1					

Remarks
 (1)EXCLUSIVE FOR FINNISH.

Fig.9. ELECTRICAL PARTS

9. ELECTRICAL PARTS



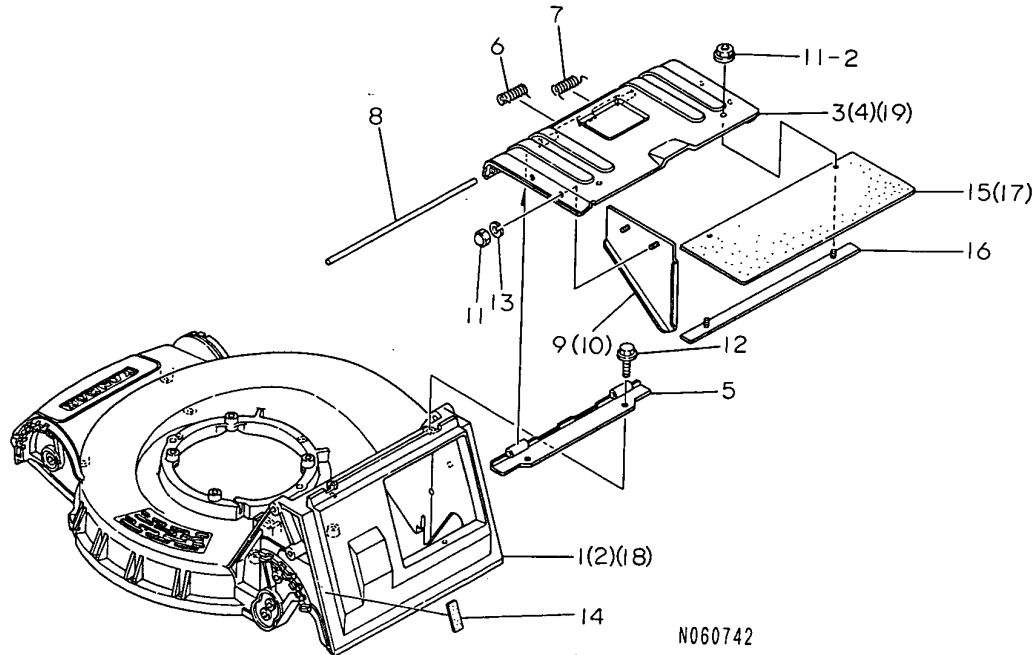
(A)=YL480T(R,-V)
 (B)=YL480TS(-N)
 (C)=YL480TSE(-N)

(D)=YL530T(R,-V)
 (E)=YL530TS
 (F)=YL530TSE

No.	Lev.	Parts No.	Description	Q'ty						I	R
				(A)	(B)	(C)	(D)	(E)	(F)		
1	1	1E1061-58250	SWITCH ASSY, REVERSE			1					1
2	2	1E1061-58260	KEY, REVERSE			1					1
3	1	1E1060-58050	BATTERY YT4L-12			1					1
4	1	1E1061-58050	COVER, HANDLE			1					1
5	1	1E1061-58070	HOLDER, BATTERY			1					1
6	1	1E1061-58100	RUBBER, ABSORBER B			1					1
7	1	1E1061-58150	HARNES,MAIN			1					1
8	1	1E1061-58160	HARNES,BATTERY			1					1
9	2	1E6451-82940	FUSE, GALSS 30A			2					2
10	1	1E1061-58200	PIPE, GUIDE			1					1
11	1	1E6910-82500	RELAY, CA-1A			1					1
12	1	1E6460-83400	BAND 100			1					1
13	1	1E6102-84970	BAND 140,WIRE LOCK			3					3
14	1	1E6790-95471	SCREW, TAPPING M6X16			4					4
15	1	26016-060124	BOLT 6X12 W/L.W.			2					2
16	1	26476-080162	SCREW, TAPPING M8X16			1					1

Fig.10. CASING & COVER

10. CASING & COVER



(A)=YL480T(R,-V)
(B)=YL480TS(-N)
(C)=YL480TSE(-N)

(D)=YL530T(R,-V)
(E)=YL530TS
(F)=YL530TSE

No.	Lev.	Parts No.	Description	Qty						I	R
				(A)	(B)	(C)	(D)	(E)	(F)		
1	1	1E1061-61010	CASING 48, BLADE	1	1	1					
2	1	1E1071-61010	CASING 53, BLADE				1	1	1		
3	1	1E1061-61050	COVER, CATCHER 48	1	1	1					
4	1	1E1071-61050	COVER, CATCHER 53				1	1	1		
5	1	1E1061-61070	SEAT, COVER	1	1	1	1	1	1	1	
6	1	1E1061-61110	SPRING, A	1	1	1	1	1	1	1	
7	1	1E1061-61120	SPRING, B	1	1	1	1	1	1	1	
8	1	1E1061-61130	PIN, 8X310	1	1	1	1	1	1	1	
9	1	1E1061-61200	STAY L, CATCHER COVER	1	1	1	1	1	1	1	
9-1	1	1E1061-61201	STAY, L	1	1	1	1	1	1	1	N
		(A=F010552) (B=F010645) (C=F010257) (D=F010785)					(E=F011213)		(F=F010554)		
9-2	1	1E1061-61201	STAY, L				1		1		Z
		(B=F015274)					(E=F017010)				
10	1	1E1061-61250	STAY R, CATCHER COVER	1	1	1	1	1	1	1	
10-1	1	1E1061-61251	STAY, R	1	1	1	1	1	1	1	N
		(A=F010552) (B=F010645) (C=F010257) (D=F010785)					(E=F011213)		(F=F010554)		
10-2	1	1E1061-61251	STAY, R				1		1		Z
		(B=F015274)					(E=F017010)				
11	1	26658-060002	NUT, CAP M6	4	4	4	4	4	4	4	
11-1	1	26367-060002	NUT, M6	4	4	4	4	4	4	4	N
		(A=F010552) (B=F010645) (C=F010257) (D=F010785)					(E=F011213)		(F=F010554)		
11-2	1	26367-060002	NUT, M6	6	6	6	6	6	6	6	K
		(A=F010552) (B=FXXXXXX) (C=F010257) (D=F010785)					(E=F011213)		(F=F010554)		
11-3	1	26367-060002	NUT, M6				6		6		Z
		(B=F015274)					(E=F017010)				
12	1	26476-080162	SCREW, TAPPING M8X16	2	2	2	2	2	2	2	
13	1	22217-060000	WASHER, SPRING 6	4	4	4	4	4	4	4	Z
		(A=F010552) (B=F010645) (C=F010257) (D=F010785)					(E=F011213)		(F=F010554)		
14	1	1E1061-61300	RUBBER, ABSORBER A	2	2	2	2	2	2	2	W
		(A=FXXXXXX) (B=FXXXXXX) (C=FXXXXXX) (D=FXXXXXX)					(E=FXXXXXX)		(F=FXXXXXX)		
14-1	1	1E1061-61300	RUBBER, ABSORBER A				2		2		Z
		(B=F015274)					(E=F017010)				
15	1	1E1061-61310	RUBBER, PROTECT 480	1	1	1					W
		(A=F010552) (B=F010645) (C=F010257)									
15-1	1	1E1061-61310	RUBBER, PROTECT 480				1				Z
		(B=F015274)									
16	1	1E1061-61320	WASHER, RETAINER	1	1	1	1	1	1	1	W
		(A=F010552) (B=F010645) (C=F010257) (D=F010785)					(E=F011213)		(F=F010554)		
16-1	1	1E1061-61320	WASHER, RETAINER				1				Z
		(B=F015274)									
17	1	1E1071-61310	RUBBER, PROTECT 530					1	1	1	W
		(D=F010785)					(E=F011213)		(F=F010554)		
17-1	1	1E1071-61310	RUBBER, PROTECT 530						1		Z
							(E=F017010)				
18	1	7E1061-61010	CASING, BLD 48PL ASSY	1	1						1
19	1	7E1061-61050	COVER, CATCH 48PL ASSY	1	1						1

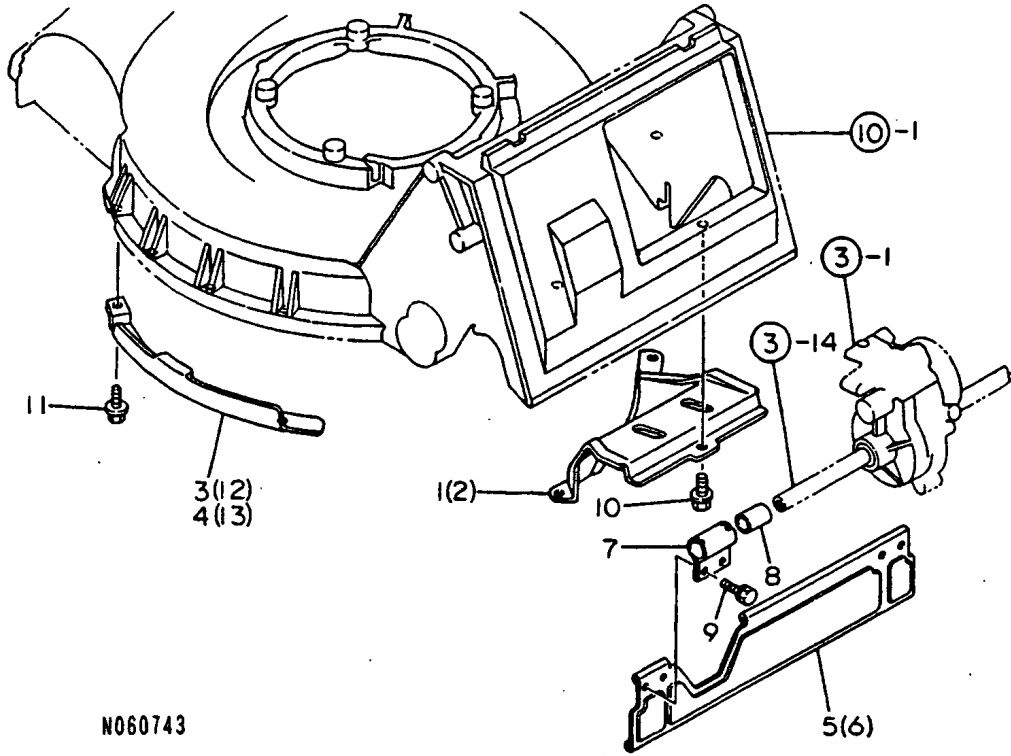
Remarks

(1) EXCLUSIVE FOR YL480TS-N, YL480TSE-N

N:Old $\xrightarrow{\text{Yes}}$ New, Q:Old $\xrightarrow{\text{No}}$ New, R:Old $\xrightarrow{\text{Yes}}$ New, S:Old $\xrightarrow{\text{No}}$ New, W:Add, Z:Discontinued, F:Interchangeable by set, K:Qty Change

Fig.11. SCRAPER & GUARD

11. SCRAPER & GUARD



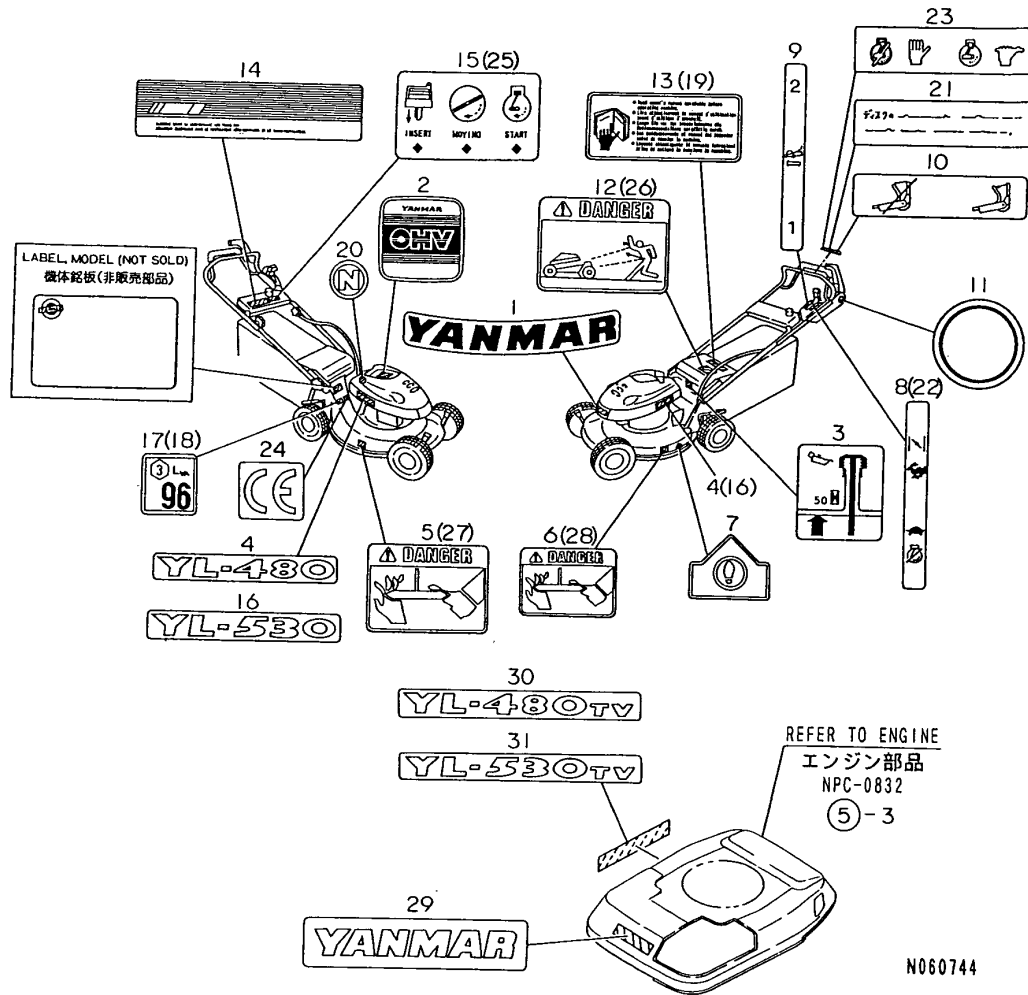
N060743

(A)=YL480T(R,-V) (D)=YL530T(R,-V)
 (B)=YL480TS(-N) (E)=YL530TS
 (C)=YL480TSE(-N) (F)=YL530TSE

No.	Lev.	Parts No.	Description	Q'ty						I	R
				(A)	(B)	(C)	(D)	(E)	(F)		
1	1	1E1061-63010	GUIDE, GLASS 48	1	1	1					
2	1	1E1071-63010	GUIDE, GLASS 53				1	1	1		
3	1	1E1061-63050	GUIDE 48L, GLASS FRNT	1	1	1					
3-1	1	1E1061-63051	GUIDE, GLASS F 48	1	1	1					N
		(A=FXXXXXX) (B=FXXXXXX) (C=FXXXXXX)									
4	1	1E1071-63050	GUIDE 53L, GLASS FRNT				1	1	1		
4-1	1	1E1071-63051-1	GUIDE, GLASS F L53				1	1	1	1	N
			(D=FXXXXXX) (E=FXXXXXX) (F=FXXXXXX)								
5	1	1E1061-63100	GUARD, STONE	1	1	1					
6	1	1E1071-63100	GUARD, STONE				1	1	1		
7	1	1E1061-63130	HANGER, STONE GUARD	2	2	2	2	2	2	2	
8	1	1E1061-63140	BUSH, 161825	2	2	2	2	2	2	2	
9	1	26016-060124	BOLT 6X12 W/L.W.	4	4	4	4	4	4	4	
10	1	26476-080162	SCREW, TAPPING M8X16	3	3	3	3	3	3	3	
11	1	26476-080162	SCREW, TAPPING M8X16	4	4	4	4	4	4	4	
12	1	1E1061-63060	GUIDE, GLASS F R48	1	1	1					
13	1	1E1071-63060-1	GUIDE, GLASS F R53				1	1	1		

Fig.12. LABELS

12. LABELS



(A)=YL480T(R,-V)
(B)=YL480TS(-N)
(C)=YL480TSE(-N)

(D)=YL530T(R,-V)
(E)=YL530TS
(F)=YL530TSE

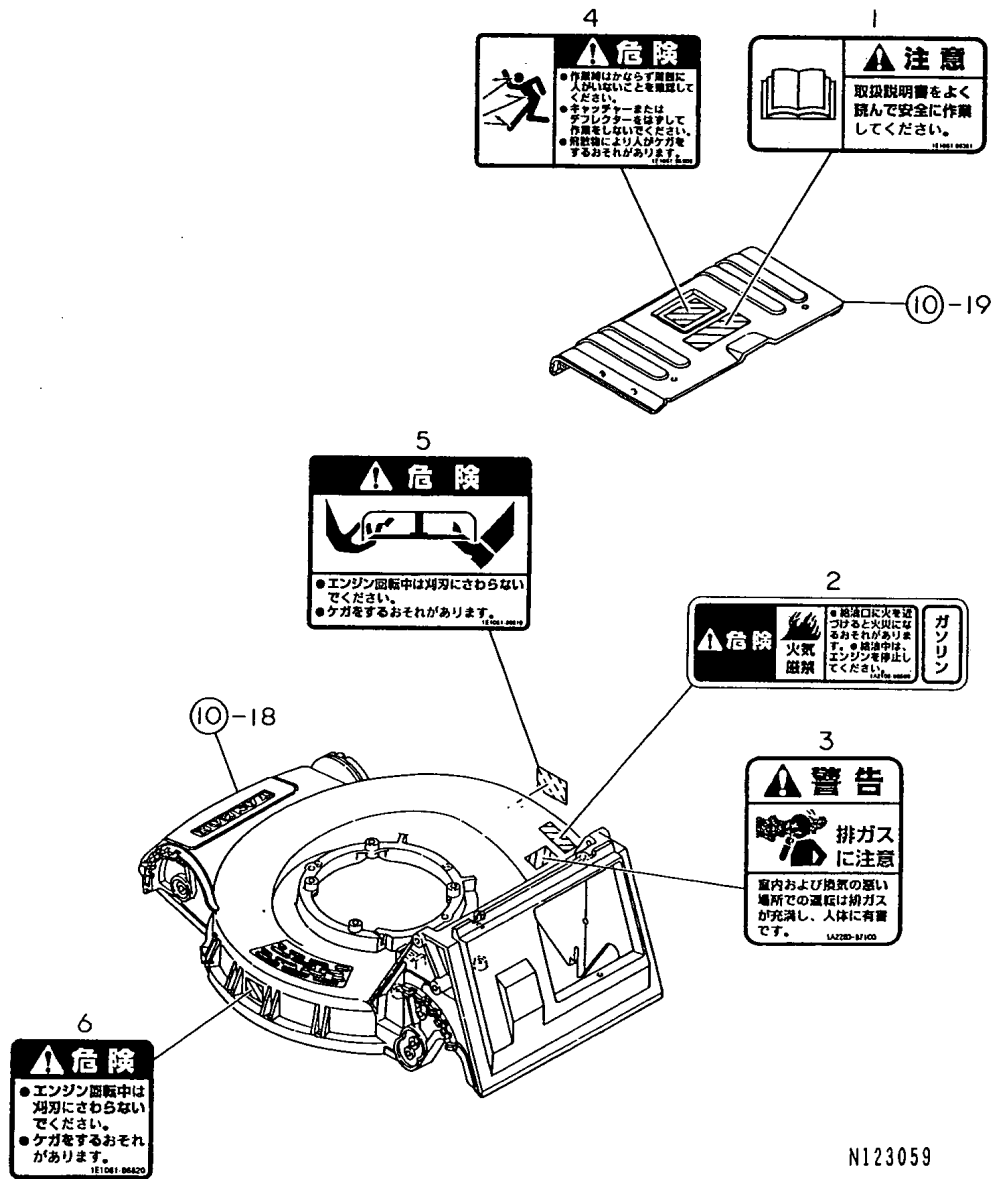
No.	Lev.	Parts No.	Description	Q'ty						I	R
				(A)	(B)	(C)	(D)	(E)	(F)		
1	1	1E1061-86010	LABEL, FRONT MARK	1	1	1	1	1	1		
2	1	1E1061-86030	LABEL, RECOIL	1	1	1	1	1	1		
3	1	1E1061-86050	LABEL, OIL CAUTION	1	1	1	1	1	1		
4	1	1E1061-86060	LABEL, YL-480	2	2	2					
5	1	1E1061-86100	LABEL, HOUSING A	1	1	1	1	1	1		
6	1	1E1061-86110	LABEL, HOUSING B	1	1	1	1	1	1		
7	1	1E1061-86120	LABEL,STEP	1	1	1	1	1	1		
7-1	1	1E1061-86121	LABEL, STEP	1	1	1	1	1	1		N
		(A=F010001)	(B=F010001)	(C=F010001)	(D=F010001)	(E=F010151)	(F=F010031)				
8	1	1E1061-86150	LABEL, CONTROL	1	1	1	1	1	1		
9	1	1E1061-86160	PLATE, CHANGE	1	1	1	1	1	1		
10	1	1E1061-86170	LABEL, BLADE LEVER		1	1		1	1		
10-1	1	1E1061-86171	LABEL, BLADE LEVER		1	1		1	1		R
		(B=F010210)	(C=F010079)	(E=F010551)	(F=F010233)						
11	1	1E1061-86180	LABEL, SIDE COVER		1	1		1	1		
12	1	1E1061-86200	LABEL, CATCHER COVER	1	1	1	1	1	1		
13	1	1E1061-86220	LABEL, CAUTION	1	1	1	1	1	1		
14	1	1E1061-86550	LABEL, COVER		1	1					
15	1	1E1061-86560	LABEL, KEY SWITCH			1					1
16	1	1E1071-86060	LABEL, YL-530				2	2	2		
17	1	1E1060-86910	LABEL, EC PASSING	1	1	1					
18	1	1E1070-86910	LABEL, EC PASSING				1	1	1		
19	1	1E1061-86380	LABEL N,HANDL,G CAUT		1	1					Z 1
		(B=F010628)	(C=F010286)								
20	1	1E1060-86750	MARK,CIRCLED "N"		1	1					1
21	1	1E1060-86970	LABEL, BLADE LEVER N		1	1					1
22	1	1E1061-86190	LABEL, CONTROL	1			1				2
23	1	1E1061-86600	LABEL, ENGINE STOP	1			1				2
24	1	1E1061-86610	MARK "CE"	1	1	1	1	1	1	1	W
		(A=F100001)	(B=F014735)	(C=F010934)	(D=F100001)	(E=F016133)	(F=F011472)				
25	1	1E1061-86570	LABEL, KEY SWITCH N			1					3
26	1	1E1061-86200	LABEL, CATCHER COVER		1	1					Z 1
		(B=F010628)	(C=F010286)								
27	1	1E1061-86100	LABEL, HOUSING A		1	1					Z 1
		(B=F010628)	(C=F010286)								
28	1	1E1061-86110	LABEL, HOUSING B		1	1					Z 1
		(B=F010628)	(C=F010286)								
29	1	1E1061-86020	LABEL, FRONT MARK V	1			1				4
30	1	1E1061-86080	MARK"480TV" MODEL	1							4
31	1	1E1071-86080	MARK"530TV" MODEL				1				4

Remarks

- (1)EXCLUSIVE FOR YL480TS-N,YL480TSE-N
- (2)EXCLUSIVE FOR YL480T-R,YL530T-R.
- (3)EXCLUSIVE FOR YL480TSE-N.
- (4)EXCLUSIVE FOR YL480T-V,YL530T-V.
- * FOR SAFETY LABELS.
- REFER TO GROUP NO.14

Fig.14. LABELS(SAFETY(ADD,ITEM)

14. LABELS(SAFETY(ADD, ITEM)



N123059

(A)=YL480T(R,-V)
(B)=YL480TS(-N)
(C)=YL480TSE(-N)

(D)=YL530T(R,-V)
(E)=YL530TS
(F)=YL530TSE

No.	Lev.	Parts No.	Description	Q'ty						I	R
				(A)	(B)	(C)	(D)	(E)	(F)		
1	1	1E1061-86381	LABEL, CAUTION N (B=F010628) (C=F010286)	1	1					W	1
2	1	1A2100-86500	LABEL, DANGER (B=F010628) (C=F010286)	1	1					W	1
3	1	1A2260-87100	WARNING, EXH. GAS (B=F010628) (C=F010286)	1	1					W	1
4	1	1E1061-86800	LABEL, DANGER N (B=F010628) (C=F010286)	1	1					W	1
5	1	1E1061-86810	LABEL, DANGER (B=F010628) (C=F010286)	1	1					W	1
6	1	1E1061-86820	LABEL, DANGER (B=F010628) (C=F010286)	1	1					W	1

Remarks

(1)EXCLUSIVE FOR YL480TS-N,YL480TSE-N

N:Old $\xrightarrow{\text{Yes}}$ New, Q:Old $\xrightarrow{\text{No}}$ New, R:Old $\xrightarrow{\text{Yes}}$ New, S:Old $\xrightarrow{\text{No}}$ New, W:Add, Z:Discontinued, F:Interchangeable by set, K:Q'ty Change

Parts No. Index

Parts No.	Fig. No.	Ref. No.
1A1040-46460	1	16
1A2100-86500	14	2
1A2260-87100	14	3
1C6052-88060	13	1
1E1060-12011	1	2
1E1060-12100	1	3
1E1060-12300	1	8
1E1060-12320	1	10
1E1060-12340	1	11
1E1060-12350	8	1
1E1060-12970	1	13
1E1060-12990	1	15
1E1060-25140	3	9
1E1060-25420	4	2
1E1060-31100	4	3
1E1060-31450	4	4
1E1060-41120	6	3
1E1060-42050	6	5
1E1060-51101	7	4
		8
1E1060-57200	8	10
1E1060-58050	9	3
1E1060-86750	12	20
1E1060-86910	12	17
1E1060-86970	12	21
1E1061-11100	1	1
1E1061-12150	1	4
1E1061-12170	1	5
1E1061-12220	1	6
1E1061-12250	1	7
1E1061-12251	1	7 -1
1E1061-12310	1	9
1E1061-12360	1	12
1E1061-12650	1	25
1E1061-13010	1	22
1E1061-13011	1	22 -1
1E1061-13110	1	23
1E1061-13111	1	23 -1
1E1061-13200	1	26
1E1061-21010	2	1
1E1061-21030	2	2
1E1061-21100	2	4
1E1061-21120	2	6
1E1061-21200	2	8
1E1061-25010	3	1
1E1061-25011	3	1 -1
1E1061-25012	3	1 -2
1E1061-25050	3	3
1E1061-25051	3	3 -1
1E1061-25060	3	4

Parts No.	Fig. No.	Ref. No.
1E1061-25070	3	5
1E1061-25110	3	7
1E1061-25111	3	7 -1
1E1061-25140	3	10
1E1061-25141	3	10 -1
1E1061-25142	3	10 -2
1E1061-25150	3	11
1E1061-25151	3	11 -1
1E1061-25160	3	12
1E1061-25170	3	13
1E1061-25171	3	13 -1
1E1061-25180	3	25 -1
		25 -2
1E1061-25200	3	14
1E1061-25210	3	16
1E1061-25211	3	16 -1
1E1061-25212	3	16 -2
1E1061-25250	3	17
1E1061-25270	3	18
1E1061-25271	3	18 -1
1E1061-25300	3	19
1E1061-25330	3	20
1E1061-25370	3	21
1E1061-25410	3	22
1E1061-25430	3	23
1E1061-25481	3	43
1E1061-25490	3	30 -1
1E1061-25491	3	30 -2
1E1061-25500	3	1 A
1E1061-25501	3	1 A-1
1E1061-25502	3	1 A-2
1E1061-31500	4	5
1E1061-31510	4	6
1E1061-31511	4	6 -1
1E1061-31530	4	7
1E1061-31550	4	8
1E1061-31650	4	9
1E1061-31660	4	10
1E1061-31670	4	11
1E1061-31671	4	11 -1
1E1061-31680	4	12
1E1061-31681	4	12 -1
1E1061-31690	4	28
1E1061-31750	4	13
1E1061-35010	5	1
1E1061-35050	5	2
1E1061-35200	5	3
1E1061-35210	5	4
1E1061-35250	5	5
1E1061-35350	5	6

Parts No.	Fig. No.	Ref. No.
1E1061-35510	5	7
1E1061-35550	5	8
1E1061-41100	6	1
1E1061-43010	6	7
1E1061-43011	6	7 -1
1E1061-43100	6	9
1E1061-43200	6	11
1E1061-50010	7	1
1E1061-50100	7	2
1E1061-50510	7	3
1E1061-51010	7	7
1E1061-51011	7	7 -1
1E1061-51110	7	9
1E1061-51700	7	15
1E1061-51710	7	16
1E1061-56010	7	10
1E1061-56020	7	10 -1
1E1061-56050	7	11
1E1061-56060	7	11 -1
1E1061-56100	7	12
1E1061-57010	8	2
1E1061-57011	8	2 -1
1E1061-57040	8	3
1E1061-57050	8	4
1E1061-57051	8	4 -1
1E1061-57060	8	5
1E1061-57061	8	5 -1
1E1061-57080	8	34 -1
1E1061-57090	8	35 -1
1E1061-57110	8	6
1E1061-57111	8	6 -2
1E1061-57120	8	6 -1
1E1061-57121	8	6 -3
1E1061-57130	8	7
1E1061-57140	8	8
1E1061-57141	8	8 -1
1E1061-57150	8	9
1E1061-57151	8	9 -1
1E1061-57200	8	36
1E1061-57270	8	38
1E1061-57280	8	39
1E1061-57300	8	11
1E1061-57500	8	12
1E1061-57501	8	12 -1
1E1061-57560	8	13
1E1061-57600	8	14
1E1061-57640	8	15
1E1061-57650	8	16
1E1061-57651	8	16 -1
1E1061-57700	8	17

Parts No.	Fig. No.	Ref. No.
1E1061-57701	8	17 -1
1E1061-57730	8	31
1E1061-57740	8	32
1E1061-57750	8	18
1E1061-57850	8	19
1E1061-57920	8	33
1E1061-57921	8	33 -1
1E1061-58050	9	4
1E1061-58070	9	5
1E1061-58100	9	6
1E1061-58150	9	7
1E1061-58160	9	8
1E1061-58200	9	10
1E1061-58250	9	1
1E1061-58260	9	2
1E1061-61010	10	1
1E1061-61050	10	3
1E1061-61070	10	5
1E1061-61110	10	6
1E1061-61120	10	7
1E1061-61130	10	8
1E1061-61200	10	9
1E1061-61201	10	9 -1
		9 -2
1E1061-61250	10	10
1E1061-61251	10	10 -1
		10 -2
1E1061-61300	10	14
		14 -1
1E1061-61310	10	15
		15 -1
1E1061-61320	10	16
		16 -1
1E1061-63010	11	1
1E1061-63050	11	3
1E1061-63051	11	3 -1
1E1061-63060	11	12
1E1061-63100	11	5
1E1061-63130	11	7
1E1061-63140	11	8
1E1061-65010	4	18
1E1061-65030	4	20
1E1061-65070	4	22
1E1061-65080	4	23
1E1061-65100	4	24
1E1061-86010	12	1
1E1061-86020	12	29
1E1061-86030	12	2
1E1061-86050	12	3
1E1061-86060	12	4

Parts No. Index

Parts No.	Fig. No.	Ref. No.
1E1061-86080	12	30
1E1061-86100	12	5
		27
1E1061-86110	12	6
		28
1E1061-86120	12	7
1E1061-86121	12	7 -1
1E1061-86150	12	8
1E1061-86160	12	9
1E1061-86170	12	10
1E1061-86171	12	10 -1
1E1061-86180	12	11
1E1061-86190	12	22
1E1061-86200	12	12
		26
1E1061-86220	12	13
1E1061-86380	12	19
1E1061-86381	14	1
1E1061-86550	12	14
1E1061-86560	12	15
1E1061-86570	12	25
1E1061-86600	12	23
1E1061-86610	12	24
1E1061-86800	14	4
1E1061-86810	14	5
1E1061-86820	14	6
1E1061-88091	13	3
1E1061-88092	13	3 -1
1E1070-86910	12	18
1E1071-12300	1	8 -1
1E1071-12320	1	10 -1
1E1071-12750	1	27
1E1071-21100	2	5
1E1071-21120	2	7
1E1071-21200	2	9
1E1071-25200	3	15
1E1071-31570	4	30
1E1071-31580	4	31
1E1071-31600	4	32
1E1071-31700	4	33
1E1071-41100	6	2
1E1071-43010	6	8
1E1071-43011	6	8 -1
1E1071-43100	6	10
1E1071-50010	7	1 -1
1E1071-56200	7	12 -1
1E1071-61010	10	2
1E1071-61050	10	4
1E1071-61310	10	17
		17 -1

Parts No.	Fig. No.	Ref. No.
1E1071-63010	11	2
1E1071-63050	11	4
1E1071-63051-1	11	4 -1
1E1071-63060-1	11	13
1E1071-63100	11	6
1E1071-65010	4	19
1E1071-65030	4	21
1E1071-65100	4	25
1E1071-86060	12	16
1E1071-86080	12	31
1E4060-74090	3	25
1E4070-46290	4	17
1E4110-24010	4	29
1E4150-99260	13	2
1E4320-99120	8	23
1E4480-99150	1	17
1E6102-84970	8	21
	9	13
1E6210-11050	4	1
1E6451-82940	9	9
1E6460-83400	9	12
1E6790-95471	8	22
	9	14
1E6910-39640	3	24
1E6910-82500	9	11
1G0010-82850	8	20
22137-060000	1	20
	3	26
	8	24
22137-080000	5	9
	7	5
	8	40
22137-100000	8	25
22157-080000	4	14
22190-080000	3	41 -1
22217-060000	10	13
22217-080000	7	6
		6 -1
		17
	8	26
22242-000200	2	3
22252-000220	3	44
22312-040080	3	27
22312-040140	3	28
22351-035025	3	40
22351-050025	8	27
22351-060025	3	29
22417-200120	1	21
	8	28
22451-100160	3	39

Parts No.	Fig. No.	Ref. No.
22522-040160	1	14
22551-050250	3	30
23414-080000	3	41
24101-060034	3	45
24101-063014	3	46
24104-060024	4	34
24104-062044	1	18
24311-000070	3	31
24321-001100	3	32
24550-010200	8	37
24550-012120	8	34
24550-012150	8	35
26016-060122	6	6
26016-060124	8	29
	9	15
	11	9
26016-080454	4	26
26018-080164	1	28
	4	15
26107-080122	4	16
26107-080162	4	16 -1
26107-080302	7	2 -1
26107-100352	1	24
26117-060202	3	33
26117-080122	3	42
26138-100202	6	4
26347-060002	3	34
26367-060002	10	11 -1
		11 -2
		11 -3
26367-080002	5	10
	7	13
26476-060202	3	35
26476-060302	3	36
26476-080162	1	19
	2	10
	3	37
	4	27
	7	14
	9	16
	10	12
	11	10
		11
26658-060002	10	11
26658-080002	8	30
26668-080002	7	4 -1
		8 -1
26717-060002	3	38
26717-080002	5	11
7E1061-61010	10	18

Parts No.	Fig. No.	Ref. No.
7E1061-61050	10	19